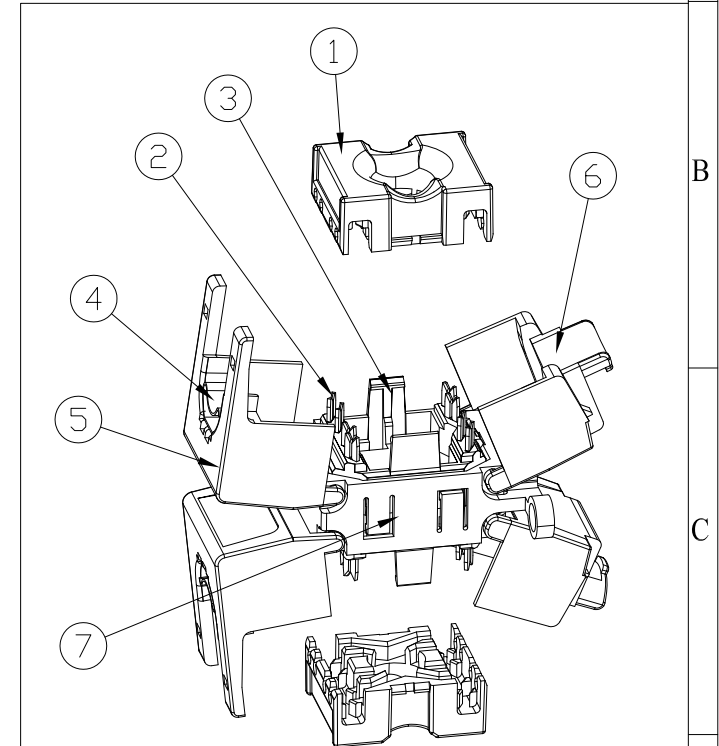
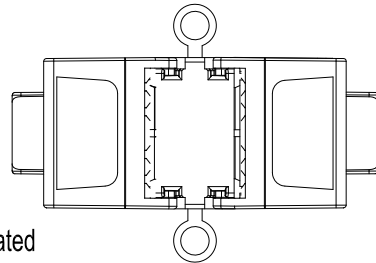
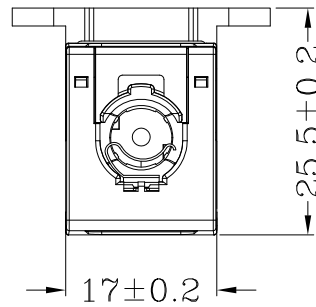
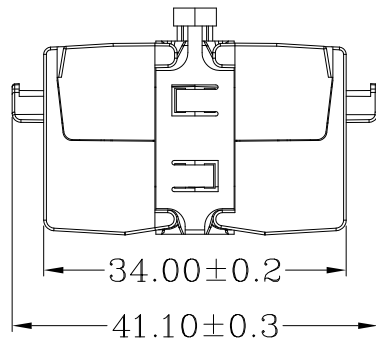
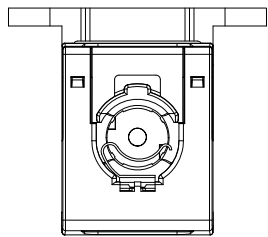
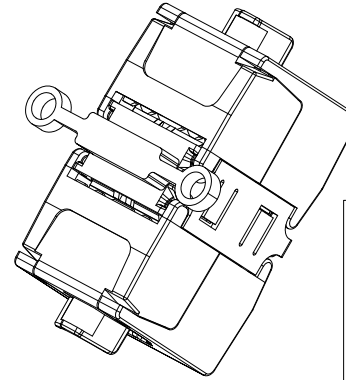
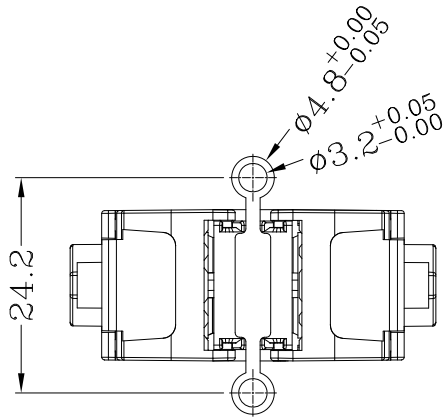


LIMITS	DEGREE CLASS			
	A	B	C	D
10	±0.02	±0.05	±0.10	±0.15
10~50	±0.05	±0.10	±0.15	±0.20
50~120	±0.10	±0.15	±0.20	±0.25
120~300	±0.15	±0.20	±0.25	±0.30
300~500	±0.20	±0.25	±0.30	±0.35
500~1000	±0.25	±0.30	±0.35	±0.40
1000~1500	±0.30	±0.35	±0.40	±0.45
ANGEL	±0.2°	±0.5°	±1.0°	±1.5°

ZONE	REV.	DESCRIPTION	DATE	APPROVED
	A			

**Wirewin**<sup>®</sup>  
European Cabling Solutions



**MECHANICAL**

- (1) Line pressing cover: PC FR
- (2) IDC Terminals: Phosphor bronze, Tin Plated
- (3) IDC Housing: PC FR
- (4) Ground Lug: SUS304
- (5) After the upper cover: Zn alloy + Nickel Plated
- (6) After the Bottom cover: Zn alloy + Nickel Plated
- (7) nomenclal: Zn alloy + Nickel Plated

MODEL: WKS CON MOD	TITLE:	<b>Wirewin</b> <sup>®</sup> European Cabling Solutions			
		ELMA 1 <input checked="" type="checkbox"/>	ELMA2 <input type="checkbox"/>		
DRAWN:	PART NO.	UNIT	MM		
DESIGNED:	MATERIAL	SCALE	1 : 1		
CHECKED:	FINISH	SHEET	1 OF 1		
	TOOLING NO.	SIZE	A4	REV.	A
APPROVED:	DWG NO.	WKS CON MOD			