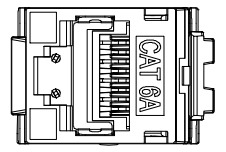
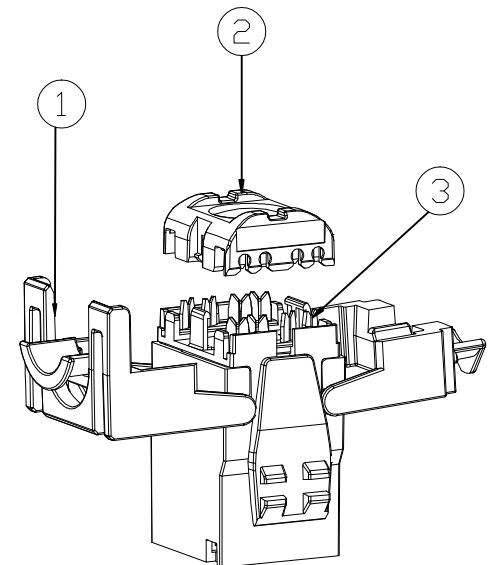
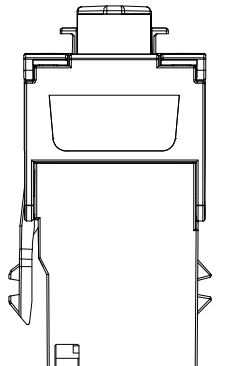
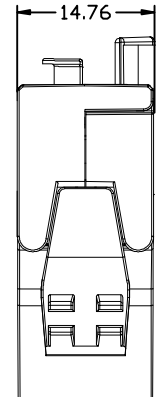
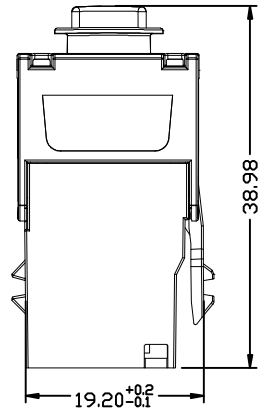
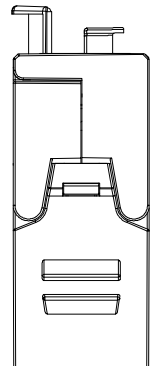
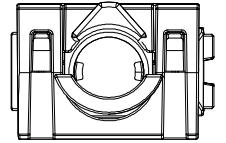


LIMITS	CLASS			
	A	B	C	D
	±0.02	±0.05	±0.10	±0.15
	±0.05	±0.10	±0.15	±0.20
	±0.10	±0.15	±0.20	±0.25
	±0.15	±0.20	±0.25	±0.30
	±0.20	±0.25	±0.30	±0.35
	±0.25	±0.30	±0.35	±0.40
ANGLE	±0.2°	±0.5°	±1.0°	±1.5°

ZONE	REV.	DESCRIPTION	DATE	APPROVED
	A			

Wirewin[®]
European Cabling Solutions



EE:
CURRENT RATING:1.5A
DIELECTRIC WITHSTANDING VOLTAGE:1000VAC 60HZ.
INSULATION RESISTANCE:500MΩ MIN.
CONTACT RESISTANCE:20mΩ MAX.

ME
Materials:1、Zn all+Nickel Plated,
2、PC
3、RJ45 Jack Contact:Phosphor bronze,50° Gold
Cavity conforms to FCC rules and Regulations Part 68

MODEL: WKS JACK C6A STP SLIM ISO		TITLE:		Wirewin [®] European Cabling Solutions	
		ELMA 1 <input checked="" type="checkbox"/>		ELMA2 <input type="checkbox"/>	
DRAWN:	PART NO.	UNIT	MM		
DESIGNED:	MATERIAL	SCALE	1:1		
CHECKED:	FINISH	SHEET	1 OF 1		
	TOOLING NO.	SIZE	A4	REV.	A
APPROVED:	DWG NO.	WKS JACK C6A STP SLIM ISO			