

SLIM-L-UF-K6A-TL WEISS

CAT6A 10 Gigabit LightPatch Cord round, U/FTP, translucent Connectors

Features

- Category 6A Patchcord
 - For 10 Gigabit Datatransfer use
 - Translucent connector, compatible with Etherlighting™
 - Tested with Fluke Cable-Certifier in Channel Test
 - Shield: U/FTP shielded
 - Color: White with transparent plug
 - Special RJ45 plug with break-proof jack
 - 4-pairs twisted
 - Wires: AWG28/7 100% copper
 - Coating: LSOH - flame retardent
 - 11 different length
 - Innovative boot design
-



Application

- Overcrowded server or network cabinets or cable channels
 - Switches with high port densities: with very short cables, it is easy to patch from switch to switch or switch to panel without a cable management panel
 - Connection of terminal devices at the table (VoIP phones, Printer, PC, Notebook), as the cables are extremely flexible and therefore easy to lay on a desk
 - Industrial applications where Ethernet connectivity is required but space is limited
 - As a patch cord in the Notebook bag for Technicians and Field Staff
 - In a private environment, to lay a patch cord under the carpet, the chair rail or even through a window seal
-

Description

The SLIM® brand CAT6A patch cables with translucent connectors are Etherlighting™ compatible and enable visual port identification. The PoE-optimized design with a larger conductor cross-section ensures reliable power delivery and reduced heat generation. Despite the reinforced construction, the cables remain noticeably slimmer than conventional standard patch cables and are ideal for flexible, space-saving patching - even in 10-Gigabit applications.

The patch cables were developed for modern network infrastructures where, in addition to high data rates, powering end devices via Power over Ethernet (PoE) plays an important role. They provide a reliable solution for applications in which data transmission and power supply are delivered through a single network cable.

Thanks to high-quality materials and precise manufacturing, the shielded, twisted-pair conductors ensure stable data transmission of up to 10 Gigabit Ethernet. At the same time, the cables are optimized for use in PoE-based network environments.

This makes the patch cables ideal for operating IP cameras, WIFI access points, VoIP phones, access control systems, and other network-based devices that receive both data and power via the network cable.

Additional reliability is provided by a robust RJ45 connector made of shatter-resistant material, which prevents the locking tab from breaking

SLIM-L-UF-K6A-TL WEISS

CAT6A 10 Gigabit LightPatch Cord round, U/FTP, translucent Connectors

even with frequent patching. The flame-retardant outer jacket also supports safe use in professional installation environments.

The translucent connector optimally supports the Etherlighting™ system and enables quick identification of ports in patch panels or server racks.

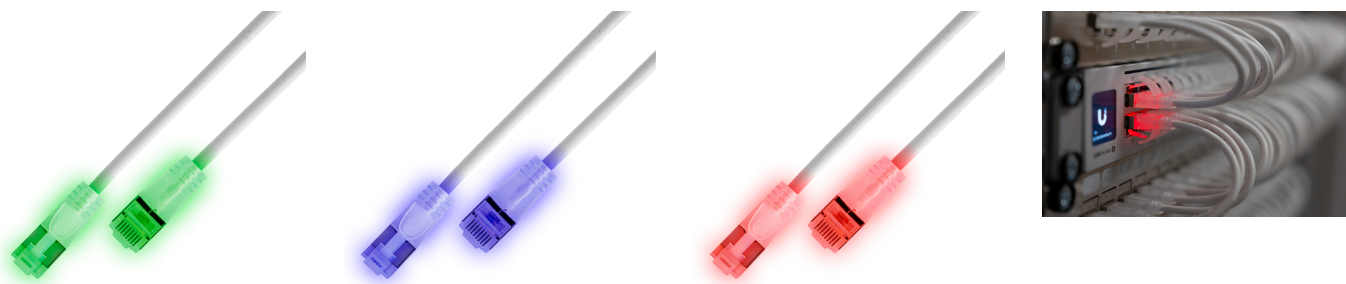
The concept is rounded off by the specially developed SLIM® boot design, which allows comfortable operation of the locking tab while maintaining a compact form factor - ideal for structured cabling with high port density.

SLIM® CAT6A Patch Cables - powerful, reliable, and optimized for modern PoE networks.

SLIM-L-UF-K6A-TL WEISS

CAT6A 10 Gigabit LightPatch Cord round, U/FTP, translucent Connectors

| Product Features | |
|---|---|
| Fire retardant version | Yes |
| AWG-size | AWG28 |
| Pining | TIA/EIA 568 B |
| Color | White |
| Color anti-kink sleeve | Colorless |
| Halogen free according to EN IEC 60754-1 | Yes |
| Halogen free according to EN IEC 60754-2 | Yes |
| Halogen free according to EN IEC 60754-3 | Yes |
| Cable Diameter | Ø 4.8 mm |
| Cable construction | 4x2 |
| Cable Type | U/FTP |
| Category | CAT.6A (IEC) |
| Anti-kink sleeve | moulded-on |
| Copper Cable Construction | 4x2xAWG28/7 |
| Length | 0.1 m / 0.15 m / 0.2 m / 0.25 m / 0.5 m / 1 m / 1.5 m / 2 m / 3 m / 5 m / 7.5 m |
| Coating | LSOH |
| Color outer sheath | White |
| max. Data Transfer | 10 Gigabit |
| Oil resistant according to EN IEC 60811-404 | No |
| Pin assignment | 1:1 |
| PoE | Yes |
| Locking lever | Yes |
| Shield | U/FTP shielded |
| Type of Connector Connection 1 | RJ45 8(8) |
| Type of Connector Connection 2 | RJ45 8(8) |



| Product Number | | EAN Code |
|--------------------------|------------|---------------|
| SLIM-L-UF-K6A-TL 0.1 WT | 0.1 Meter | 9120138893280 |
| SLIM-L-UF-K6A-TL 0.15 WT | 0.15 Meter | 9120138893297 |
| SLIM-L-UF-K6A-TL 0.2 WT | 0.20 Meter | 9120138893303 |
| SLIM-L-UF-K6A-TL 0.25 WT | 0.25 Meter | 9120138893310 |
| SLIM-L-UF-K6A-TL 0.5 WT | 0.5 Meter | 9120138893327 |
| SLIM-L-UF-K6A-TL 1.0 WT | 1.0 Meter | 9120138893334 |

SLIM-L-UF-K6A-TL WEISS

CAT6A 10 Gigabit LightPatch Cord round, U/FTP, translucent Connectors

| | | |
|-------------------------|-----------|---------------|
| SLIM-L-UF-K6A-TL 1.5 WT | 1.5 Meter | 9120138893341 |
| SLIM-L-UF-K6A-TL 2.0 WT | 2.0 Meter | 9120138893358 |
| SLIM-L-UF-K6A-TL 3.0 WT | 3.0 Meter | 9120138893365 |
| SLIM-L-UF-K6A-TL 5.0 WT | 5.0 Meter | 9120138893372 |
| SLIM-L-UF-K6A-TL 7.5 WT | 7.5 Meter | 9120138893389 |