





Quick Installation Guide

Thank you for purchasing PLANET ENW-9720P/ENW-9740P 2/4-Port 10/100/1000T 802.3at PoE+ PCI Express server adapter. Both ENW-9720P and ENW-9740P incorporate not only Intel server-grade GbE Mac Controller but also IEEE 802.3at compliant with up to 30W power per port. The 802.3at PoE+ PCI Express server adapter is a highly cost-effective solution to deliver Power over Ethernet solution to meet the requirement of the industrial field such as IP surveillance and WLAN application.

1. Package Contents

- 1 x ENW-9720P/ENW-9740P 10/100/1000T 802.3at PoE+ PCI Express Server (with long profile bracket)
- 1 x Quick Installation Guide
- 1 x Low Profile Bracket (only for ENW-9720P)


ENW-9720P	ENW-9740P
	
Quick Installation Guide	Low Profile Bracket
	

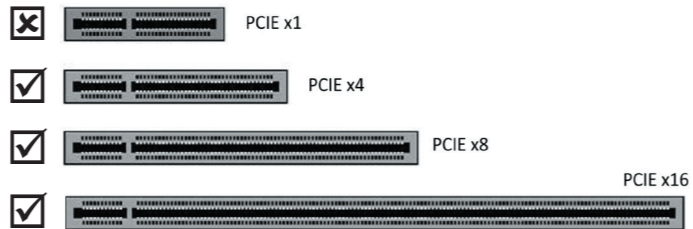
2. System Requirement

■ PCI-Express support

ENW-9720P: The Server/Workstation supports **PCI Express v2.0** (2.5GT/s), PCI Express (PCIe) x4 interface

ENW-9740P: The Server/Workstation supports **PCI Express v2.1** (5GT/s), PCI Express (PCIe) x4 interface

 Note
Below is different PCI Express Slot. The ENW-9720P/ENW-9740P is compatible with PCIe 2.0 x4 slots or larger.



■ Power Supply support

The power requirement relies on the power usage of the total computer components.

When you calculate power supply for PoE server adapter, we recommended reserve additional **60W** power for ENW-9720P and **120W** power for ENW-9740P.

■ Operation System Support:

- Windows Server 2008R2 64bits
- Windows Server 2012R2 64bits
- Windows Server 2016R2 64bits
- Windows 7 32/64bits
- Windows 8 32/64bits
- Windows 10 32/64bits
- Linux (Kernel version 2.6.x to 4.x)
- VMware® ESX 5.x

3. Hardware Installation

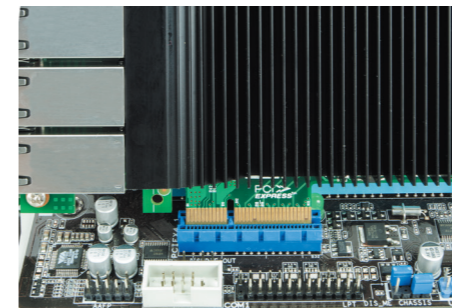
Step 1: Please turn off your PC.



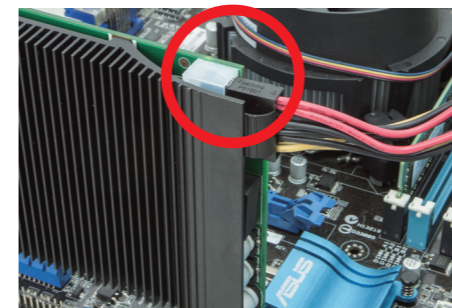
Step 2: Remove any metal decorations from your hands and wrists.


Step 3: Remove the cover from your PC.

Step 4: Locate an empty PCI Express slot and carefully insert the 802.3at PoE+ PCI Express server adapter into the chosen slot firmly.



Step 5: If ENW-9740P is installed, please plug in firmly the **4 molex plug** from power supply.



 Note
When installing ENW-9720P, there is no need for additional 4 molex power.

Step 6: Secure the 802.3at PoE+ PCI Express server adapter with the screw.

Step 7: Replace the PC cover.


Step 8: Power on your PC and refer to the next section to install driver.

4. Installation on Windows 7

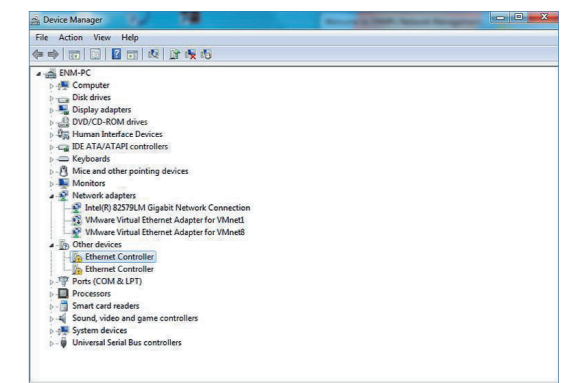
Before installing drivers of ENW-9720P and ENW-9740P server adapters, please visit PLANET ENW-9720P and ENW-9740P web pages to download the drivers for your operation system.

<https://www.planet.com.tw/en/support/downloads?&method=keyword&keyword=ENW-97&view=4#list>

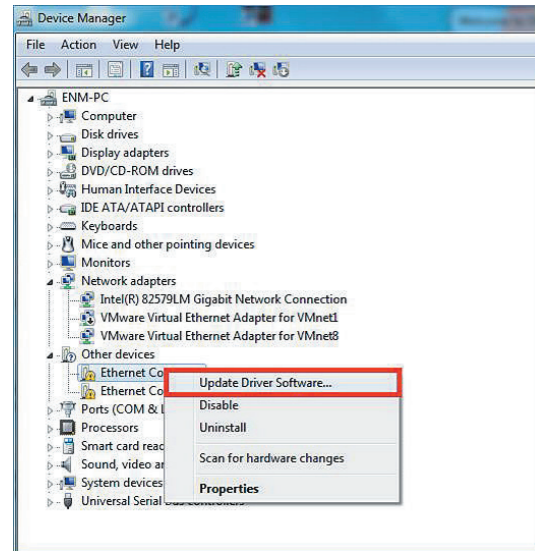


 Note
For window 7 and later windows-based operation system, the operation system will detect server adapter and install driver automatically. However, if driver is not installed successfully, you have to install driver manually.

1. This operation is under Win7 which it is similar to Win8/10/Windows Server 2008/Windows Server 2012/Windows Server 2016.

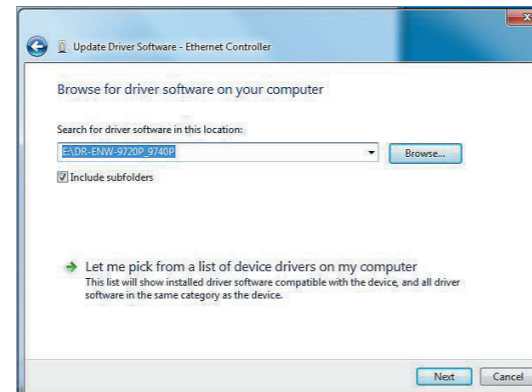


2. Please move and right-click the mouse button for Ethernet Controller item and select "Update Driver Software".

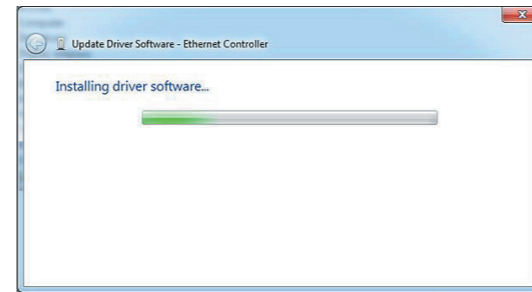


- 9 -

4. Please click "Browse" to specify the driver location to install. (Assume "E:\DR-ENW-9720P_9740P" is the directory where driver files are located.) Click "Next" to continue.

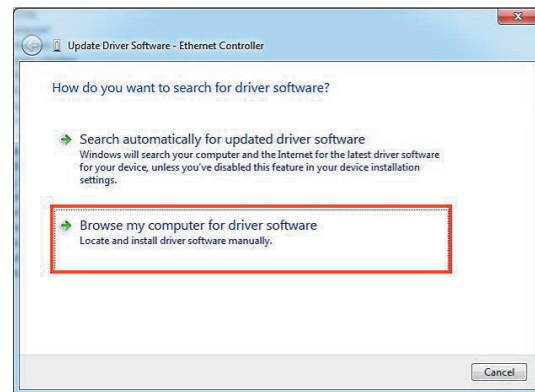


The driver is being installed.



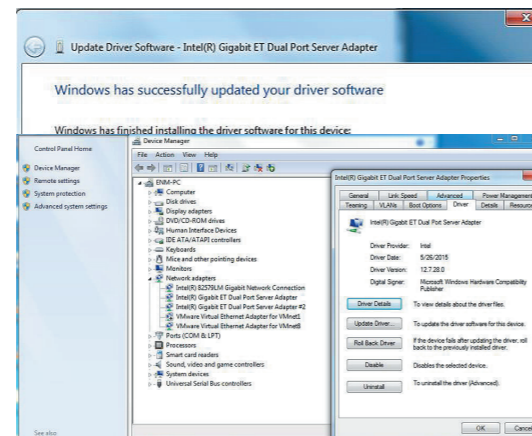
- 11 -

3. Please select "Browse my computer for driver software" for the next step.



- 10 -

5. Click the "Close" button to complete the driver installation.



For more details, please refer to the manual found on the website.

- 12 -



Quick Installation Guide



PLANET Technology Corp.
10F., No. 96, Minquan Rd., Xindian Dist., New Taipei City 231, Taiwan
2011-AF1010-000



Customer Support

Thank you for purchasing PLANET products. You can browse our online FAQ resource on PLANET web site first to check if it could solve your issue. If you need more support information, please contact PLANET switch support team.

PLANET online FAQs:
<http://www.planet.com.tw/en/support/faq.php>

Support team mail address:
support@planet.com.tw

ENW-9720P/ENW-9740P User's Manual:
<https://www.planet.com.tw/en/support/downloads?&method=keyword&keyword=ENW-97&view=3#list>



- 13 -