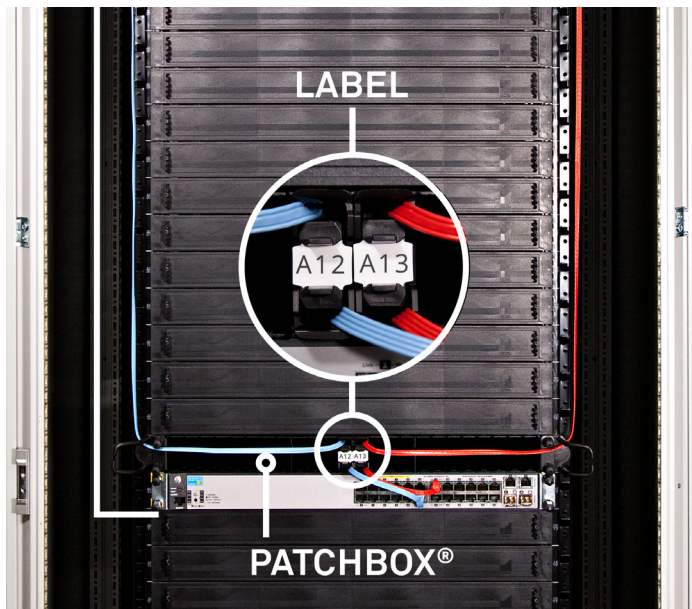


PATCHBOX ID Labels

PATCHBOX Simplify IT



PATCHBOX ID Labels

DESCRIPTION

The ID Labels are simply slid onto the cable stopper on the Cassette. When the PATCHBOX is mounted above or underneath a switch you already have a logical assignment of the Cassettes to the switch ports. With the patch panel port written on the ID Label you see all your connections with an blink of the eye.

TECHNICAL SPECIFICATIONS

WEIGHT

0.02kg

PACKAGING DIMENSIONS

160mm x 235mm x 20mm WxDxH

HS-CODE

8538 9099

MADE IN THE EU

ITEMS INCLUDED

2 x DIN A5 tear-off ID Labels 96 Labels

PRODUCT CODE

IDLABELW