

LHG LTE kit / 4G kit

The LHG LTE kit is a device for remote locations that are within cellular network coverage. Mount it outdoors, on a pole, mast or any high enough structure, and connect even where cell phones can't. Due to its large sized high gain antenna, the device is capable to connect to cell towers in extreme rural locations, giving you the ability to provide last mile internet access where nothing else is available.

The unit is equipped with one Ethernet port, has a built in high quality Category 4 modem for speeds of up to 150 Mbit/s downlink and 50 Mbit/s uplink.



24 V 0.38 A power adapter



PoE injector



2x metal ring



K-LHG kit



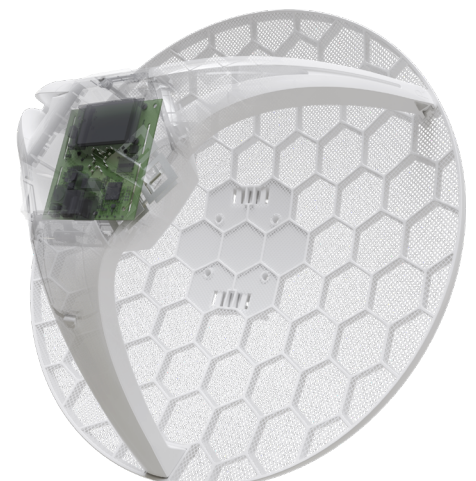
Three versions are available:

RBLHGR&R11e-LTE includes LTE modem that supports International LTE bands 1, 2, 3, 7, 8, 20, 38 and 40.

RBLHGR&R11e-LTE-US includes LTE modem that supports LTE bands 2, 4, 5 and 12, mostly used by mobile operators in United States, Canada and Latin America.

LHG 4G kit (RBLHGR&R11e-4G) includes LTE modem that supports LTE FDD bands 3 (1800MHz), 7 (2600MHz), 20 (800MHz) and 31 (450MHz), as well as LTE TDD bands 41n (2500MHz), 42 (3500MHz) and 43 (3700MHz).

RBLHGR is shipped without an LTE card installed (empty miniPCI-e slot), so you can use your own LTE card



Specifications

Product code	RBLHGR&R11e-LTE	RBLHGR&R11e-LTE-US	RBLHGR&R11e-4G
CPU	QCA9531 650 MHz		
Size of RAM	64 MB		
Storage	16 MB Flash		
10/100 Ethernet ports	1		
LTE antenna gain	21 dBi		
Antenna beam width	25°		
LTE category	4 (150Mbps Downlink, 50Mbps Uplink)		
3G category	R7 (21Mbps Downlinks, 5.76Mbps Uplink)	R8 (Cat24 - 42.2Mbps Downlink) R7 (Cat14 - 21.1Mbps Downlink)	-
2G category	Class12	-	-
SIM slot	1 (Mini SIM)		
PoE in	Yes		
Supported input voltage	12 - 57 V (Passive PoE, 802.3af/at)		
Dimensions	391 x 391 x 227 mm		
Operating temperature	-40°C .. +60°C tested		
License level	3		
Operating System	RouterOS		
Max Power consumption	6 W		

Supported bands

RBLHGR&R11e-LTE-US

LTE (FDD) bands 2(1900)/4(1700)/5(850)/12(700)

3G bands 2(1900)/5(850)

RBLHGR&R11e-4G

LTE (FDD) bands 3/7/20/31 (1800/2600/800/450)

LTE (TDD) bands 41n/42/43 (2500/3500/3700)

RBLHGR&R11e-LTE

LTE (FDD) bands 1(2100)/2(1900)/3(1800)/7(2600)/8(900)/20(800)

LTE (TDD) bands 38(2600)/40(2300)

3G bands 1(2100)/2(1900)/5(850)/8(900)

2G bands 2(1900)/3(1800)/5(850)/8(900)

