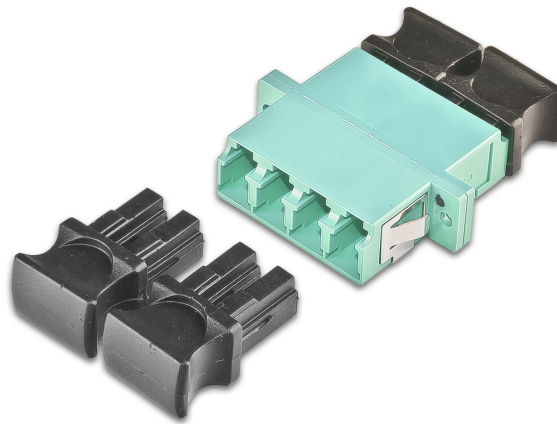

High Quality Fiber Adapter, LC, quadro, Multimode OM3



DESCRIPTION

All LIGHTWIN® fiberoptic patchcable couplers are processed to a high-quality product with certain processing methods.

These couplers are suitable for all fiberoptic applications in a wide range of telecommunications applications.

Typical application areas are patches in data centers, server or network cabinets, as well as FTTH (Fiber to the Home).

The use of special guide sleeves for the LIGHTWIN® multimode patchcable couplers and specially selected guide sleeves with the lowest tolerances for the LIGHTWIN® singlemode patchcable couplers achieves damping values that go far beyond the required standards according to ISO / IEC.

Other advantages of the LIGHTWIN® fiberoptic patchcable:

- LIGHTWIN® Lifetime Warranty
- 100% tested
- Use of special guide sleeves with minimum tolerances
- All plug combinations on request at short notice

FEATURES

- Multimode OM3
- Footprint: DSC
- Material: Plastic
- Color: Aqua
- One-piece housing
- Fastening with clips and screws
- Lightwin® Lifetime Warranty

High Quality Fiber Adapter, LC, quadro, Multimode OM3

PRODUCT FEATURES

| | |
|------------------|---------------------|
| Model | Quad |
| Mounting | Clips / Screws |
| Color | Turquoise |
| Fiber Category | Multimode OM3 |
| Material | Plastic |
| Connector Type 1 | LC |
| <hr/> | |
| EAN Code | 9120046984810 |
| Weight | 0 kg |
| <hr/> | |
| PRODUCT NUMBER | LKUP 4LC-4LC MM OM3 |

APPLICATION

General information about fiberoptic patchcable couplers:

It provides a detachable connection between two fiberoptic patchcables.

Fiber optic products operate with light, so they do not (or cause) susceptibility to electromagnetic interference, such as comparatively copper wires.

Because of the low attenuation of the optical cables, it is also possible to bridge distances of more than 100 km without optical amplification.